

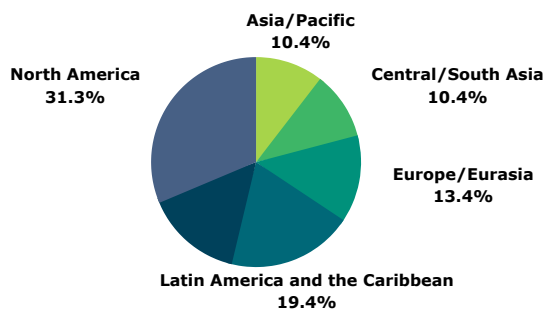
Research to Practice in Youth Development

A brief Youth Excel Launch Event survey, April 2021

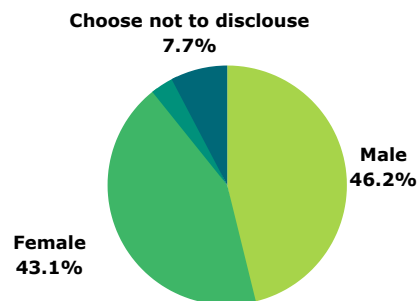
Prior to the Youth Excel Launch Event on May 4, 2021, registered attendees were asked to complete a brief survey sharing their experience on the use of research to inform practice in youth development programs. See below for selected data summaries of attendees' responses.

Respondent demographics:

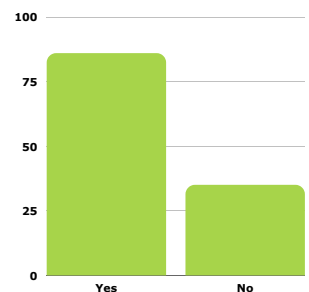
What is your home region?



Gender



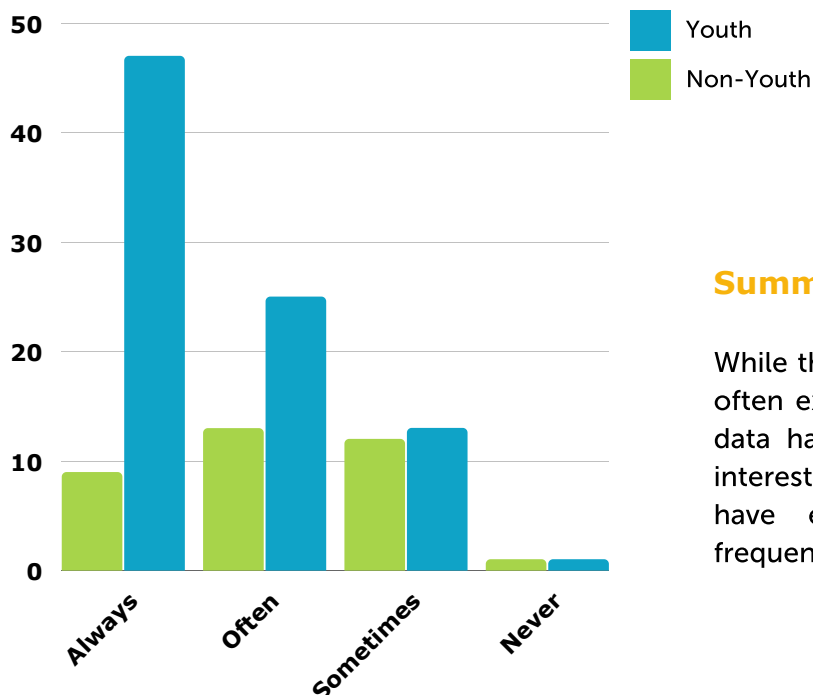
I identify as youth



Total responses: 121

When research does improve practice....

In your role working with youth programs, how often have you experienced situations where research and data helped to improve programs in real time?



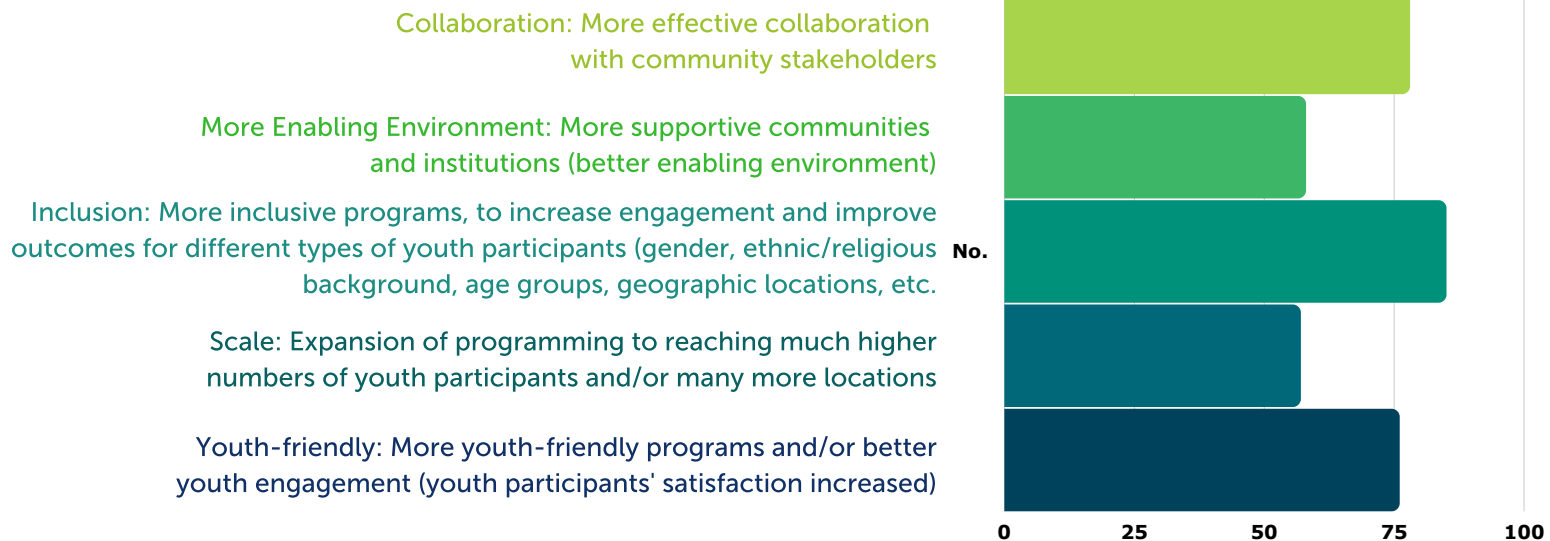
Summary of findings:

While the majority of respondents have always or often experienced situations where research and data have improved program in real time, it is interesting that respondents who identify as youth have experienced this with much greater frequency than those who identify as non-youth.

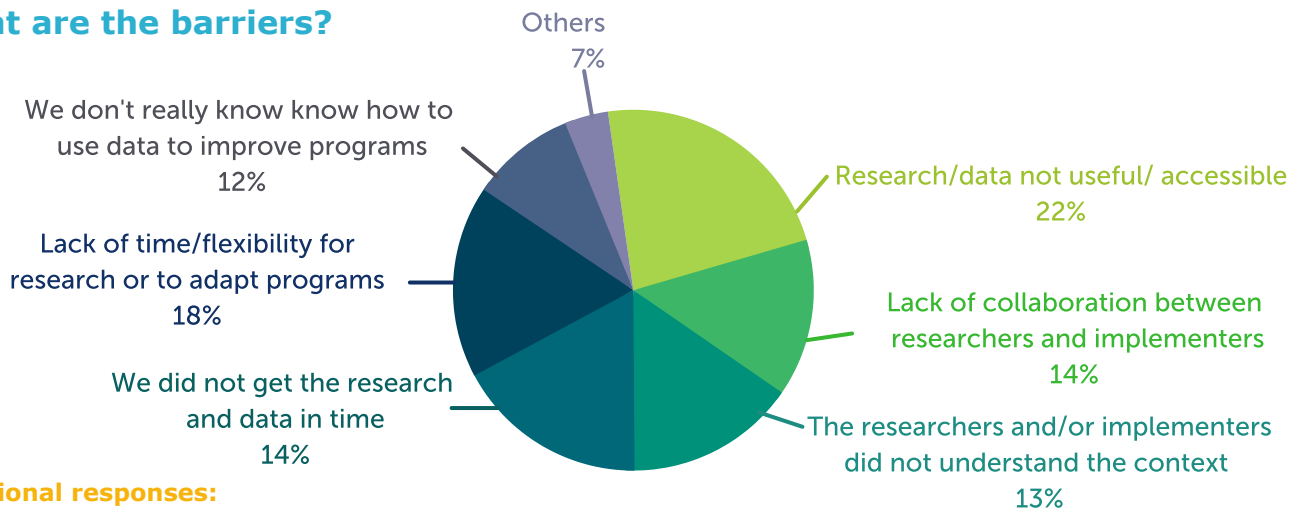
Research to Practice in Youth Development

A brief Youth Excel Launch Event survey, April 2021

When research/data HAVE improved programs in real time, how were your programs improved? (tick all that apply)



What are the barriers?



Additional responses:

In addition to the pre-set categories, some respondents shared additional challenges with translating research into practice. These challenges included: lack of funding, resources, and bandwidth; daunting logistics, particularly in challenging contexts; inaccessible information; and lack of interest and investment in research on youth.

Learn with us!

Youth Excel is committed to bridging the gap between research and practice, and the gap between practice and research. We are developing and testing strategies to make research, data, and learning useful, usable, and accessible to more youth organizations and in demand by donors and other decision-makers.

Stay Connected!

- Follow us on [Facebook!](#)
- Other organizations and institutions, please check out our [Partnership Factsheet](#), and/or contact us at excelyouth@irex.org to discuss partnership opportunities.
- Sign up for our newsletter [here](#).